



SIMPLE LIFE



SIMPLE LIFE



## Whitwell Drive, Burton-On-Trent, DE15

£1,200 PCM

Welcome to Dracan Village at Drakelow Park, an emerging suburban neighbourhood located three miles south of Burton town centre.

The welcoming central hallway of the Grantham sits in between the living room and the kitchen. A house designed with you in mind, the spacious lounge provides the perfect area to relax, whilst the dining/kitchen area provides a great place to spend time and entertain with its French windows opening on to the garden. A WC is conveniently situated off the hallway, completing the downstairs.

Upstairs, the house has a large master bedroom with fitted, mirrored wardrobes, and a further two bedrooms. A stylish family bathroom with a separate bath and shower provides the best of both worlds, whilst a storeroom on the landing provides a space to store bits and pieces.

The development provides excellent locational advantages, Burton town centre has plenty to offer with national retailers and brands such as Next, Primark, H&M, Boots, Cineworld and many more. Alongside this, Branston Water Park is located just one mile from the site, allowing residents to enjoy nature walks, trails and wildlife reserve.

Dracan Village benefits from great road and railway connectivity. The site is located 14 miles away from the M6 and 18 miles away from the M1. In addition, there will be a new link road built crossing to the A38. Burton train station is located less than three miles away from the development, providing regular connections to Birmingham New Street, Derby and Nottingham twice hourly.

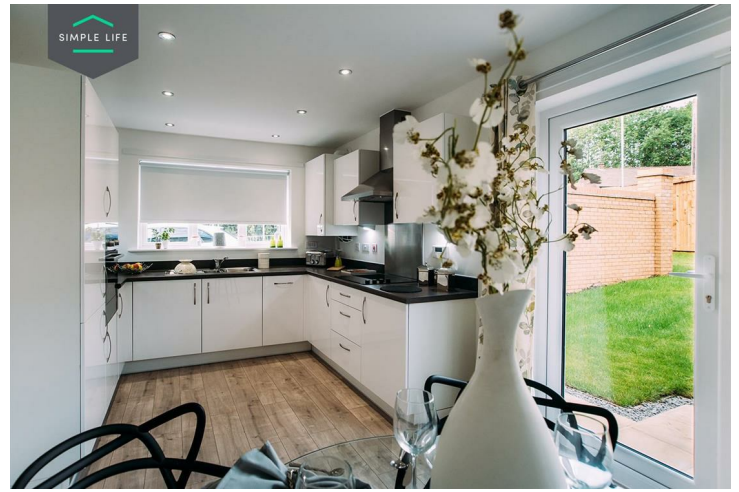
Well served by both primary and secondary schools including the immediate vicinity Riverview Primary, Edge Hill Academy, Violet Way academy, Paulet High School and Burton & South Derbyshire College.

To access the site, use postcode DE15 9UA.

Deposit £1380  
Holding Deposit £270  
Unfurnished  
Council Tax C  
Available 1st April 2026







## Key Features

- Car Parking Space
- Modern kitchen worktops and units
- Fridge freezer
- Carpets up the stairs and in the bedrooms
- Private back garden
- Security alarm system
- Dishwasher
- Washing machine
- Wood-effect flooring in the kitchen

## Location

